



ICI

amU Institut cancer
et immunologie
Aix Marseille Université



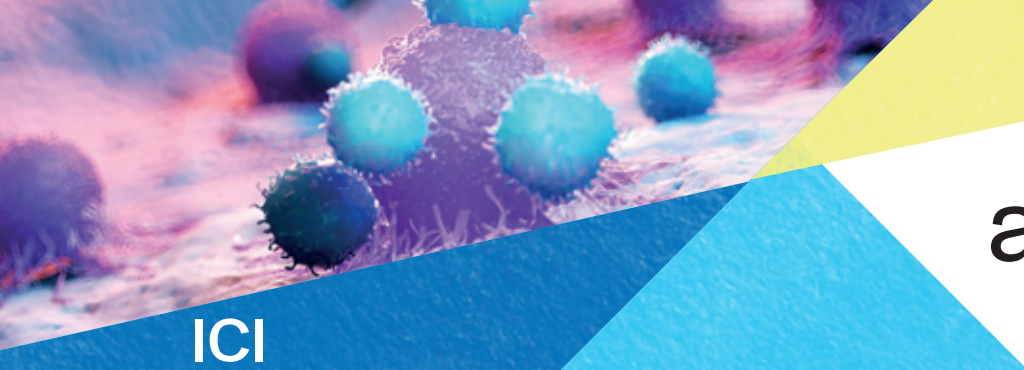
Forming a community

Training through and for research

Connecting disciplines

Strengthening partnerships

Acting internationally

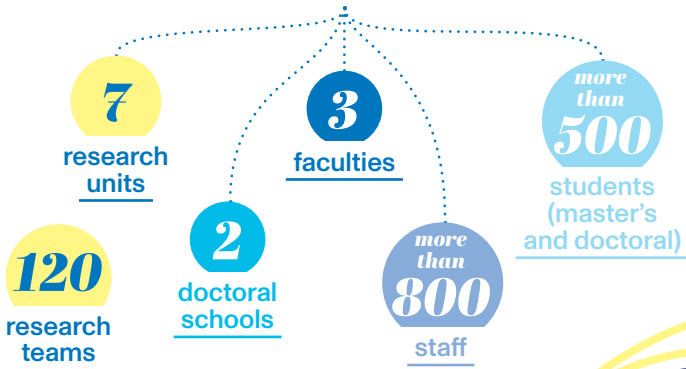


ICI

As a nexus of oncology and immunology, the institute is shaping a united, committed, local and international community, providing an interdisciplinary energy of collective responses to the challenges of training, research and their synergy with the business world.

The Institute for cancer and immunology aims to bring together the medical, scientific and biotechnology communities involved in these disciplines to promote the training of future generations and accelerate the discovery of new treatments based on knowledge of the immune system and cancer cells. To achieve this, the institute is strengthening collaboration between scientists and clinicians through interdisciplinary research programmes, and implementing existing training by setting up integrated international programmes for training, research and the optimisation of research findings for the benefit of patients.

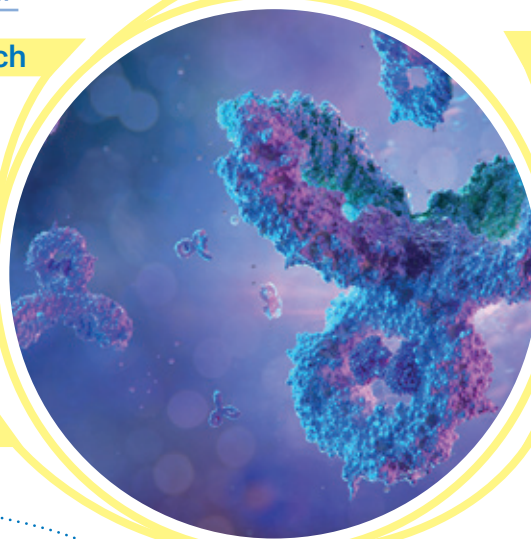
Forming a community



- Health
- Immuno-oncology
- Immunotherapy
- Biotechnology
- “Omics” technologies

Training through and for research

- ▶ Co-construction of new training programmes and a doctoral programme
- ▶ International blended learning courses with 5 CIVIS partners
- ▶ Interdisciplinary summer schools for master's and PhD students



Acting internationally

- ▶ Internships in IPC and AP-HM hospitals for CIVIS medical students
- ▶ CIVIS alliance, European civic university: Short-term mobilities (platforms and summer school)
- ▶ Erasmus+ Blended Intensive Program (BIP): laboratory and summer school internships

Connecting disciplines

Health and life sciences

Advanced science and technology

Humanities

Pooled facilities with the SingleCellEX+ awardee project

Interdisciplinary incentive calls for projects

Research & Creation Chair in Oncology and Immunology in partnership with Iméra: Innovative, interdisciplinary artistic research in residence

Initiation of inter-institute projects: Cancer and microbiology conference with IM2B

Strengthening partnerships

- ▶ Paoli-Calmettes institute
- ▶ AP-HM
- ▶ PACA Cancéropôle (cancer research centre)
- ▶ Eurobiomed
- ▶ Kedge Business School



Watch the institute's animated film



The institute as seen by its members



Meet our executive office



Deputy research director:
Sandrine Roulland



Director:
Anthony Gonçalves



Deputy training director:
Emmanuelle Charafe



Research-training project
manager
Stéphanie Bernard



Project manager:
Marie-Dominique Franco



Socio-economic and cultural
world deputy director:
Cristina Ghirelli

Discover the entire governance team:
<http://url.univ-amu.fr/institut-ICI-gouvernance>

Focus on

Our research and creation programme

The Institute for cancer and immunology aims to stimulate the discovery of new avenues for cancer immunotherapy by supporting research and the education of new generations of researchers. It has developed an original, collaborative programme involving researchers, teachers, students, artists, entrepreneurs and patients. The strength of this collective is reflected in the Research & Creation Chair that the ICI is co-funding with Iméra, the Aix Marseille Université institute for advanced study, to support innovative, interdisciplinary artistic research projects that embody the complex challenges of cancer and immunology.

"Rejecting an instrumental approach to art, the ICI/Iméra Research & Creation Chair is based on the principle that artists produce knowledge. Focusing on creation, transmission and impact, the Chair is structured around the following three fundamental areas: therapeutic use of artistic practices; social representations of cancer for the production of illustrated books, films (etc.); consideration of the relationship between artistic practices and clinical and/or scientific practices."

Contact

Director: Anthony Gonçalves
Project manager: Marie-Dominique Franco

ici-contact@univ-amu.fr

www.univ-amu.fr/ici-cancer-immuno



Training at ICI

amU Institut cancer
et immunologie
Aix Marseille Université

*Training for, through and in research,
with continuity from master's to doctorate level*

Training for, through and in research, with continuity from master's to doctorate level

Our ecosystem

more than
400
master's
students¹

100
PhD
students²

7
key master's

1
interdisciplinary
doctoral
programme

3
partner
faculties

1
partner doctoral
schools

- ▶ Faculty of pharmacy
- ▶ Faculty of sciences
- ▶ Faculty of medical and paramedical sciences (SMPM)

- ▶ Life and health sciences (ED 62)

- ▶ Biology-Health
 - > Oncology programme
 - > Health technologies programme
- ▶ Immunology
- ▶ Integrative Biology and Physiology
- ▶ Bioinformatics
 - > Software Development and Data Analysis (DLAD) programme
- ▶ Health Engineering
 - > Drug Design programme
 - > Pharmacokinetics programme

Consult all master's degree specialisations:



¹ students enrolled on master's specialisations attached to the institute
² doctoral students enrolled in our partner doctoral schools

Our key actions

- ▶ Co-construction of new training programmes and a doctoral programme
- ▶ International hybrid courses with 5 CIVIS partners, European Civic University (Erasmus+ Blended Intensive Programs)
- ▶ Interdisciplinary summer schools for master's and PhD students with courses and workshops
- ▶ Short-term mobility within laboratories and platforms

2020-2023

2
summer schools

2
blended mobility programmes

1
doctoral programme

more than
200
participants

8
nationalities

13
PhD students

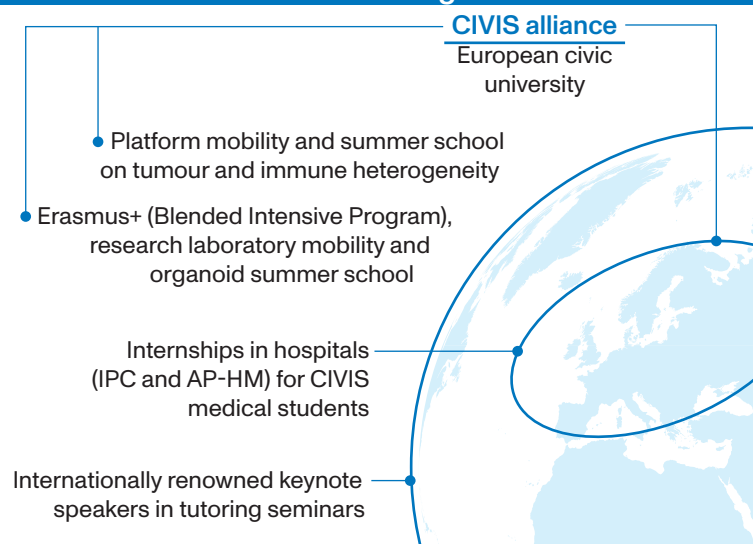
5
nationalities

"I had the opportunity to take part in the Summer School on "Tumour heterogeneity and single cell approaches" (2021 edition) and the Blended Mobility (2022 edition) organised by the Institute for cancer and immunology. These two programmes were the occasion to attend high-quality lectures on many aspects of immuno-oncology, given by international experts. I also had the opportunity to go on a short mobility trip to Madrid to learn a cutting-edge technique. The programme is also an opportunity to meet international students, expand our network and practise our language skills. So I'm very grateful to the Institute for cancer and immunology's programme for these enriching experiences."



Maëlle Picard
1st year PhD student in the CRCM's Predictive Oncology team

Our international training



Contact



Research at ICI

amU Institut cancer
et immunologie
Aix Marseille Université

*Bringing together the cancer research
and immunology strengths of the
Aix-Marseille site to consolidate our
international scientific position*



Bringing together the cancer research and immunology strengths of the Aix-Marseille site to consolidate our international scientific position

Research ecosystem

120
teams

in

7
research units



Health and life sciences

- ▶ Marseille centre for cancer research (CRCM)
- ▶ Marseille-Luminy centre for immunology (CIML)
- ▶ Centre for cardiovascular and nutrition research (C2VN)
- ▶ Institute for neurophysiopathology (INP)

Advanced science and technology

- ▶ Marseille institute for developmental biology (IBDM)
- ▶ Theories and approaches of genomic complexity (TAGC)
- ▶ Adhesion and inflammation (LAI)

"I would like to thank the Institute for cancer and immunology for their dedication to backing projects that are both structuring and innovative with respect to the region. I applied to the 2022 multidisciplinary A*MIDEX call for projects with the help of ICI, which set up a 'fair play' preselection system for all researchers while remaining rigorous about the selection criteria. Following ICI's endorsement, my research project was included in the selection process set up by A*MIDEX. I owe this funding to the quality of ICI's scientific committee. I subsequently called on ICI again, as part of the funding of a thesis project financed by this multidisciplinary A*MIDEX, to finance a brilliant and atypical foreign student whom it would have been more complicated to recruit through the traditional channels of the doctoral school. I believe that ICI's selection of this student was strongly linked to the consistency of the thesis project with the A*MIDEX funding mentioned above. Finally, I'd also like to mention the help another of my students received from ICI to complete their thesis, which had been severely affected by the lockdown caused by the COVID-19 crisis.

I would like to thank the Institute for cancer and immunology and its committees not only for the funding received, but also for the Institute's other activities, i.e. conferences and training courses."



Cyril Fauriat
CR, CRCM
Awardee of the Interdisciplinary Call for Projects 2022 and the ICI PhD Call for Projects 2023

Our main areas of research

- ▶ Signalling pathways in cancer and immune cells
- ▶ Multi-scale heterogeneity of tumour and immune systems
- ▶ Immune surveillance and inflammatory responses controlling autoimmunity and cancer
- ▶ Modulation of immune responses in normal and pathological conditions
- ▶ Translational and clinical research in oncoimmunology
- ▶ Development of omics and multi-scale analysis technologies

Our key actions

- ▶ Awardee of the "SingleCellEX+" structuring project and co-funding by partners for the purchase of single-cell analysis equipment
> €5m endowment
- ▶ Awardee of 3 interdisciplinary projects, led by 7 research units, supported by the A*Midex foundation
- ▶ Partnership with Canceropôle PACA (cancer research centre)
> 11 co-funded "Emergence" projects
- ▶ Annual scientific conference on interdisciplinary fields at the research/clinical interface
- ▶ Initiating inter-institute projects
> 1 "Cancer and Microbiology" conference with IM2B, the Microbiology, Bioenergies and Biotechnology Institute

Contact

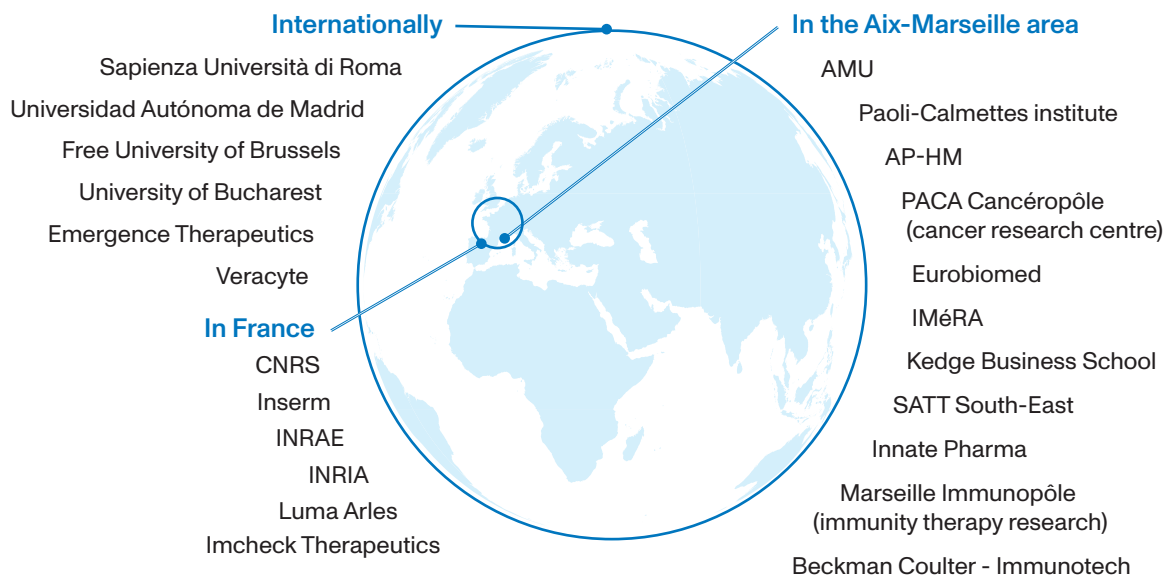
Strengthening and developing special links with academic and institutional players and the socio-economic and cultural world

"ICI's objectives and their common research areas of interest made it obvious that our two organisations should join forces. The partnership we have forged over the last few years means we can pool our resources to support research projects by junior researchers, particularly through the cancer research centre's Emergence call for projects."



Johanna Kabadanian
Director, Canceropôle PACA

Our key partners include



Our key actions

2020

Partnership with the Fondation Luma Arles and Pierre Huyghe for his "After U Umwelt" exhibition

a co-production of imaginary worlds between humans and artificial intelligence

a year's training in the economic context of the healthcare industries and entrepreneurship in the biomedical sector

ICI "Innovation & socio-economic anchoring" breakfast meetings

2023

R&D seminar in collaboration with Kedge Business School

Intensive day to raise awareness of innovation in healthcare and strategic analysis

Innovative, interdisciplinary artistic research in residence

2023

Research & Creation Chair in Oncology and Immunology in partnership with IMéRA

Contact

Deputy director of the socio-economic and cultural world: Cristina Ghirelli

ici-contact@univ-amu.fr

www.univ-amu.fr/ici-cancer-immuno



*The Institute for cancer and immunology brings together teams
on 5 university and scientific sites*



Graphic design: DIRCOM AMU | October 2024 | photo credits: Escalanta, Sarah Chambon, Jean Fondacci and Aix-Marseille Université (Elisa Ropiot)

The Aix Marseille Université institutes are coordinated by the Amidex foundation



The Aix-Marseille Excellence Initiative, a consortium between Aix Marseille Université and 8 partners

